
Fall 2021 Auditions – Bass Clarinet

(For Fall 2021 Band Placements)

These upcoming auditions will determine band placement for the Fall Semester of 2021-2022. Students will sign up for audition times on SignUpGenius (links available on the band website and BAND app.) Audition dates are May 17th through May 21st.

Audition Process

- Students will sign up for an audition time online. You can find the sign up on the band website in the member's section and on the BAND app.
 - Students who do not sign up for a time will be randomly assigned a time.
 - Students who do not audition will be placed in Concert Band for the Fall of 2021.
- Students will arrive on time for their audition.
- Students should decide which group to audition for and prepare the following based on that decision.
 - **Wind Symphony**
 - i. CCISD High School Band Audition Music
 - ii. Draw 2 scales from concert Bb, Eb, Ab, Db, G, C, F
 - iii. Draw 1 scale from concert D, A, E, B, Gb
 - iv. Sight Read – Level 3 and Level 4
 - **Symphonic Band**
 - i. CCISD High School Band Audition Music
 - ii. Draw 2 scales from concert Bb, Eb, Ab, Db, G, C, F
 - iii. Sight Read – Level 2 and Level 3
 - **Concert Band**
 - i. CCISD High School Band Audition Music
 - ii. Draw 2 scales from concert Bb, Eb, Ab, Db, G, C, F
 - iii. No Sight Reading Required
- Students are encouraged to use their Sight Reading Factory subscription to practice sight reading. There are "classes" setup in there for each Level (2/3/4) so you can practice what you need for your audition.
 - *If you do not have a Sight Reading Factory subscription, please see your band director.*
- Scales are to be performed:
 - Full Range if possible. If a student cannot play all ranges on a scale, they should play the ranges on which they will sound the best.
 - Quarter note should be set at 80.
 - Students will tongue up and slur down.

Results will be announced as soon as all auditions are completed or by the end of the day Friday, May 21st.

High School Band

Moderato $\text{♩} = 80$

18. *p* *mf* *p* *mf* [5]

[10] *f* [15] *p* [20] *pp* [25] *f* [30] *mf* [35] *p* *f* [40] *f* *p* *f*

Full Range Scales

In All Twelve Major Key Signatures

B/C



A musical staff in treble clef with a common time signature (C). The scale starts on B4 and ascends stepwise to C5, then descends stepwise back to B4. The notes are B, C, D, E, F, G, A, B, C, B, A, G, F, E, D, C, B.

F/G



A musical staff in treble clef with a common time signature (C) and one sharp (F#). The scale starts on F4 and ascends stepwise to G5, then descends stepwise back to F4. The notes are F, G, A, B, C, D, E, F, G, F, E, D, C, B, A, G, F.

C/D



A musical staff in treble clef with a common time signature (C) and two sharps (F#, C#). The scale starts on C4 and ascends stepwise to D5, then descends stepwise back to C4. The notes are C, D, E, F#, G, A, B, C, D, C, B, A, G, F#, E, D, C.

G/A



A musical staff in treble clef with a common time signature (C) and two sharps (F#, C#). The scale starts on G4 and ascends stepwise to A5, then descends stepwise back to G4. The notes are G, A, B, C, D, E, F#, G, A, G, F#, E, D, C, B, A, G.

D/E



A musical staff in treble clef with a common time signature (C) and two sharps (F#, C#). The scale starts on D4 and ascends stepwise to E5, then descends stepwise back to D4. The notes are D, E, F#, G, A, B, C, D, E, D, C, B, A, G, F#, E, D.

A/B



A musical staff in treble clef with a common time signature (C) and three sharps (F#, C#, G#). The scale starts on A4 and ascends stepwise to B5, then descends stepwise back to A4. The notes are A, B, C, D, E, F#, G, A, B, A, G, F#, E, D, C, B, A.

E/F#

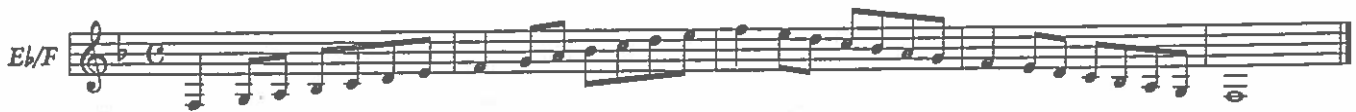


A musical staff in treble clef with a common time signature (C) and three sharps (F#, C#, G#). The scale starts on E4 and ascends stepwise to F#5, then descends stepwise back to E4. The notes are E, F#, G, A, B, C, D, E, F#, E, D, C, B, A, G, F#, E.

E/G#



A musical staff in treble clef with a common time signature (C) and three sharps (F#, C#, G#). The scale starts on E4 and ascends stepwise to G#5, then descends stepwise back to E4. The notes are E, F#, G#, A, B, C, D, E, G#, E, D, C, B, A, G#, F#, E.



Full Range Chromatic - Bass Clarinets Only

