
Fall 2021 Auditions - Bassoon

(For Fall 2021 Band Placements)

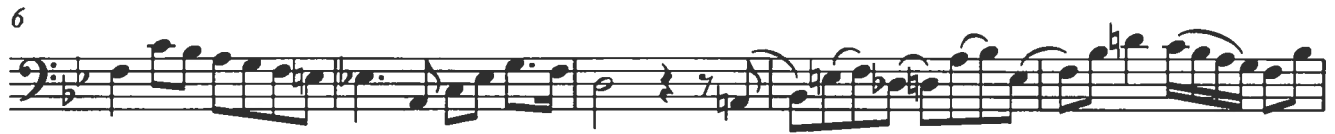
These upcoming auditions will determine band placement for the Fall Semester of 2021-2022. Students will sign up for audition times on SignUpGenius (links available on the band website and BAND app.) Audition dates are May 17th through May 21st.

Audition Process

- Students will sign up for an audition time online. You can find the sign up on the band website in the member's section and on the BAND app.
 - Students who do not sign up for a time will be randomly assigned a time.
 - Students who do not audition will be placed in Concert Band for the Fall of 2021.
- Students will arrive on time for their audition.
- Students should decide which group to audition for and prepare the following based on that decision.
 - **Wind Symphony**
 - i. CCISD High School Band Audition Music
 - ii. Draw 2 scales from concert Bb, Eb, Ab, Db, G, C, F
 - iii. Draw 1 scale from concert D, A, E, B, Gb
 - iv. Sight Read – Level 3 and Level 4
 - **Symphonic Band**
 - i. CCISD High School Band Audition Music
 - ii. Draw 2 scales from concert Bb, Eb, Ab, Db, G, C, F
 - iii. Sight Read – Level 2 and Level 3
 - **Concert Band**
 - i. CCISD High School Band Audition Music
 - ii. Draw 2 scales from concert Bb, Eb, Ab, Db, G, C, F
 - iii. No Sight Reading Required
- Students are encouraged to use their Sight Reading Factory subscription to practice sight reading. There are "classes" setup in there for each Level (2/3/4) so you can practice what you need for your audition.
 - *If you do not have a Sight Reading Factory subscription, please see your band director.*
- Scales are to be performed:
 - Full Range if possible. If a student cannot play all ranges on a scale, they should play the ranges on which they will sound the best.
 - Quarter note should be set at 80.
 - Students will tongue up and slur down.

Results will be announced as soon as all auditions are completed or by the end of the day Friday, May 21st.

High School Band



Full Range Scales

In All Twelve Major Key Signatures

B \flat

The B-flat major scale is written in bass clef with a key signature of two flats (B-flat and E-flat). The scale is presented in two lines: the first line shows the ascending scale from B-flat to G, and the second line shows the descending scale from G to B-flat. The time signature is common time (C).

F

The F major scale is written in bass clef with a key signature of one flat (B-flat). The scale is presented in two lines: the first line shows the ascending scale from F to G, and the second line shows the descending scale from G to F. The time signature is common time (C).

C

The C major scale is written in bass clef with a key signature of no sharps or flats. The scale is presented in two lines: the first line shows the ascending scale from C to G, and the second line shows the descending scale from G to C. The time signature is common time (C).

G

The G major scale is written in bass clef with a key signature of one sharp (F-sharp). The scale is presented in two lines: the first line shows the ascending scale from G to G, and the second line shows the descending scale from G to G. The time signature is common time (C).

D

The D major scale is written in bass clef with a key signature of two sharps (F-sharp and C-sharp). The scale is presented in two lines: the first line shows the ascending scale from D to G, and the second line shows the descending scale from G to D. The time signature is common time (C).

A

The A major scale is written in bass clef with a key signature of three sharps (F-sharp, C-sharp, and G-sharp). The scale is presented in two lines: the first line shows the ascending scale from A to G, and the second line shows the descending scale from G to A. The time signature is common time (C).

E

The E major scale is written in bass clef with a key signature of four sharps (F-sharp, C-sharp, G-sharp, and D-sharp). The scale is presented in two lines: the first line shows the ascending scale from E to G, and the second line shows the descending scale from G to E. The time signature is common time (C).

B

Musical notation for Bassoon part B, consisting of two staves. The first staff begins with a treble clef, a key signature of two sharps (F# and C#), and a common time signature (C). The melody starts on a middle C and ascends chromatically through the staff. The second staff continues the chromatic ascent, ending on a high G.

E♭

Musical notation for Bassoon part E♭, consisting of one staff. The key signature is one flat (Bb) and the time signature is common time (C). The melody starts on a middle C and ascends chromatically through the staff.

G♭

Musical notation for Bassoon part G♭, consisting of one staff. The key signature is two flats (Bb and Eb) and the time signature is common time (C). The melody starts on a middle C and ascends chromatically through the staff.

D♭

Musical notation for Bassoon part D♭, consisting of one staff. The key signature is three flats (Bb, Eb, and Ab) and the time signature is common time (C). The melody starts on a middle C and ascends chromatically through the staff.

A♭

Musical notation for Bassoon part A♭, consisting of one staff. The key signature is three flats (Bb, Eb, and Ab) and the time signature is common time (C). The melody starts on a middle C and ascends chromatically through the staff.

E♭

Musical notation for Bassoon part E♭, consisting of one staff. The key signature is three flats (Bb, Eb, and Ab) and the time signature is common time (C). The melody starts on a middle C and ascends chromatically through the staff.

Full Range Chromatic - Bassoons Only

Musical notation for the first four measures of the 'Full Range Chromatic' exercise. The notation is on a single staff with a bass clef and common time. It shows a chromatic scale starting on a middle C, moving up through the staff. Measure numbers 1, 2, 3, and 4 are indicated below the staff.

Musical notation for measures 5 through 8 of the 'Full Range Chromatic' exercise. The notation is on a single staff with a bass clef and common time. It shows a chromatic scale starting on a middle C, moving up through the staff. Measure numbers 5, 6, 7, and 8 are indicated below the staff.

Musical notation for the final two measures of the 'Full Range Chromatic' exercise. The notation is on a single staff with a bass clef and common time. It shows a chromatic scale starting on a middle C, moving up through the staff. Measure numbers 9 and 10 are indicated below the staff.